

1 2 3 4 5 6

A

A

B

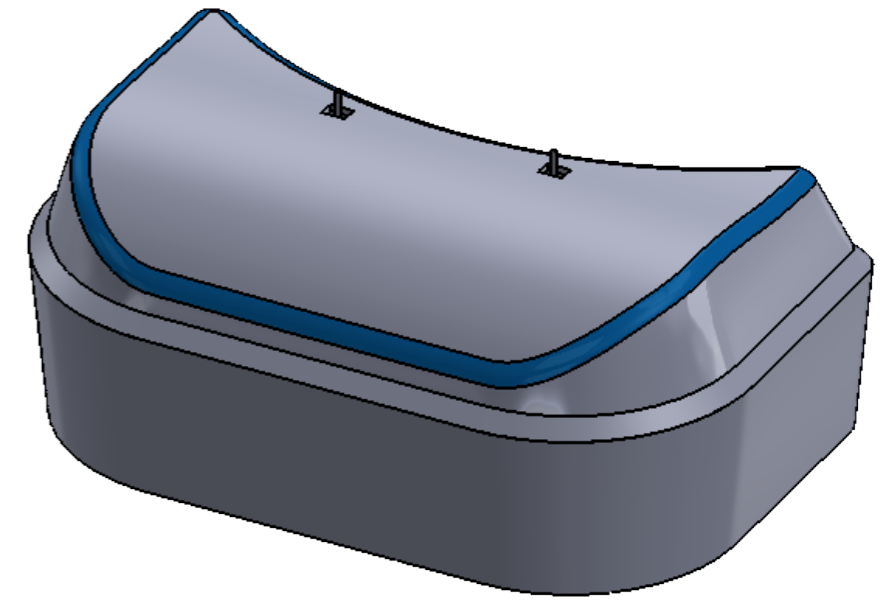
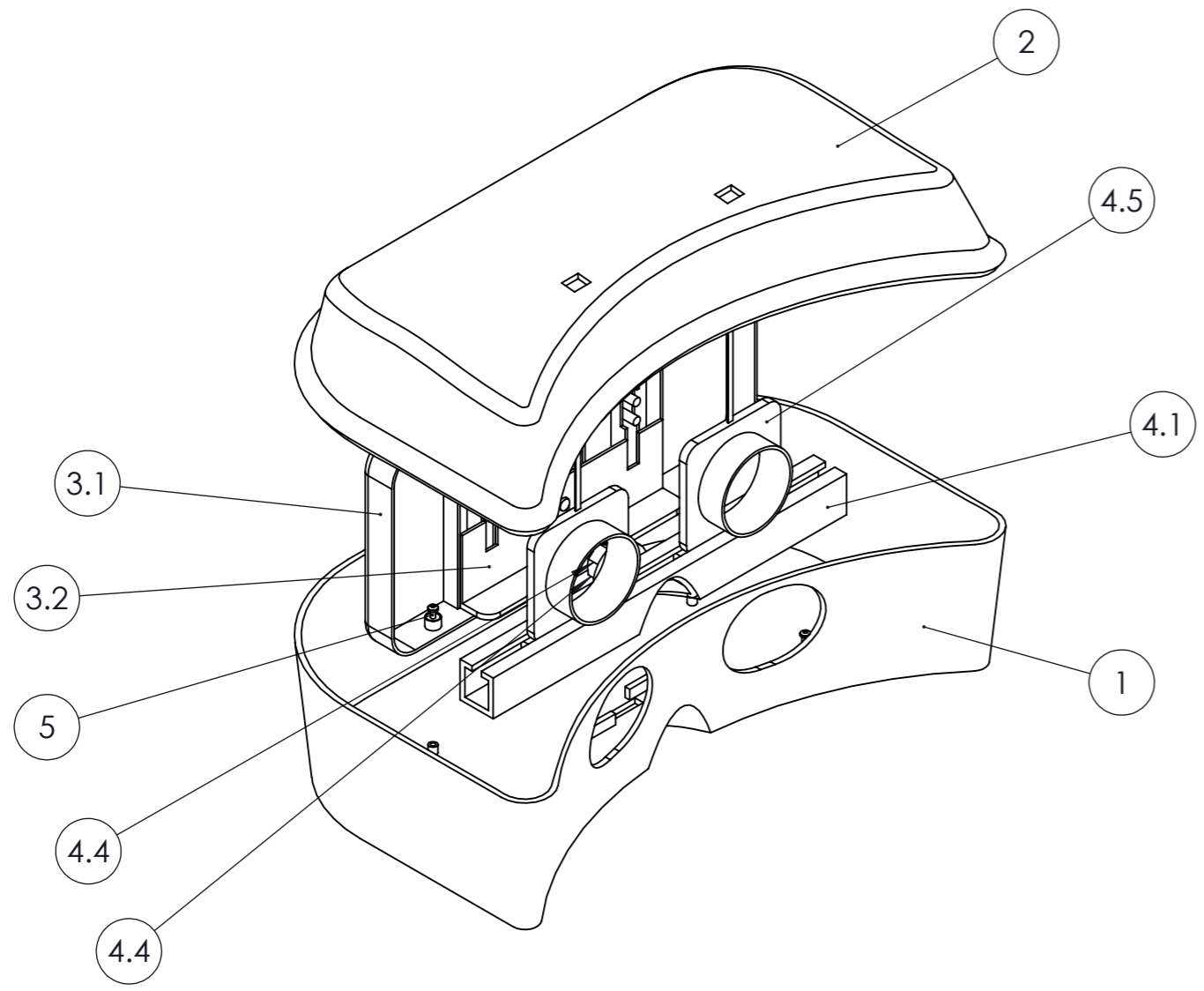
B

C

C

D

D



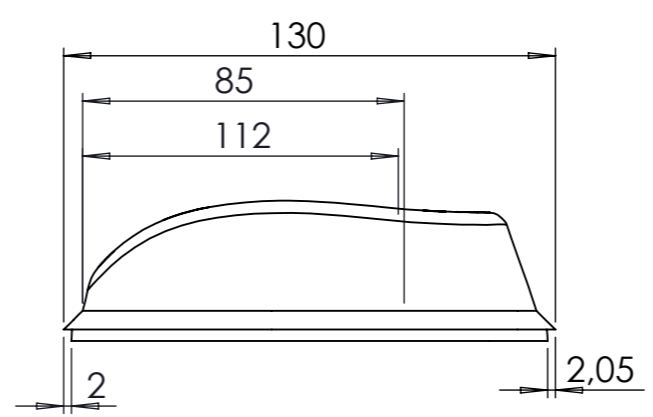
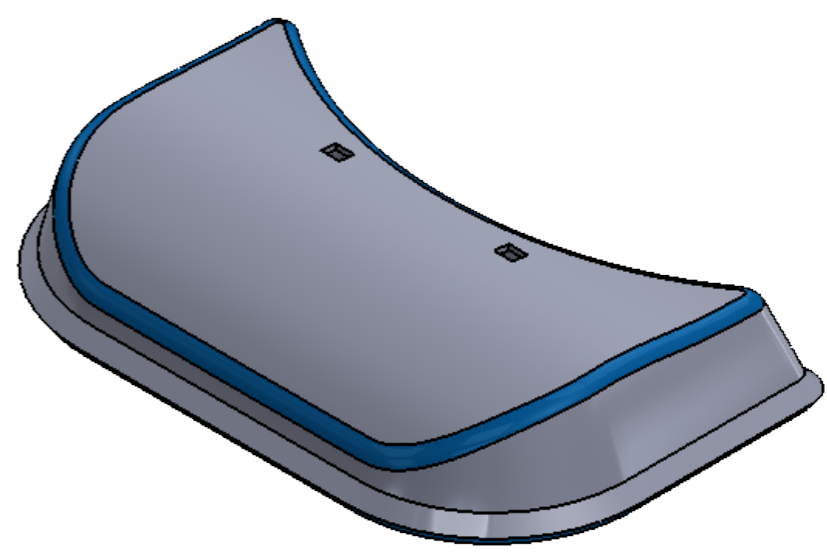
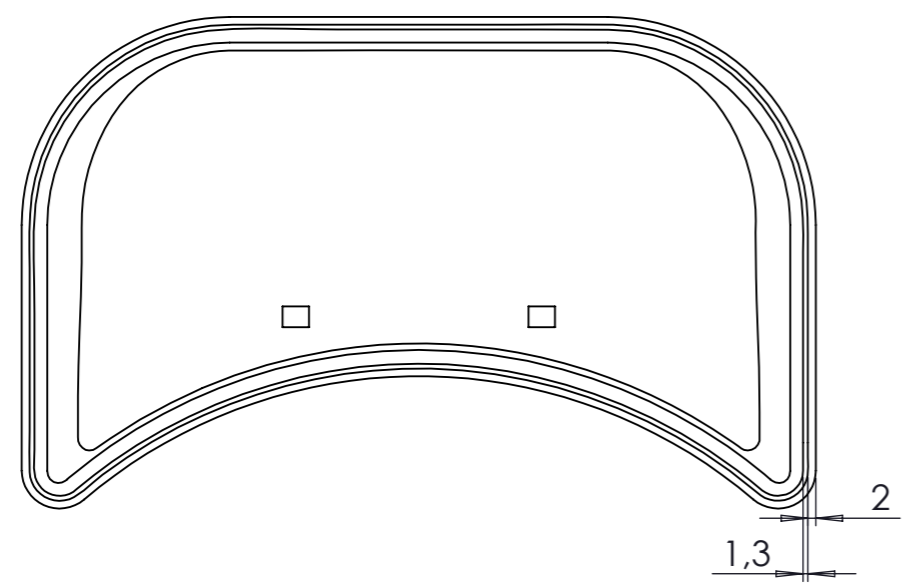
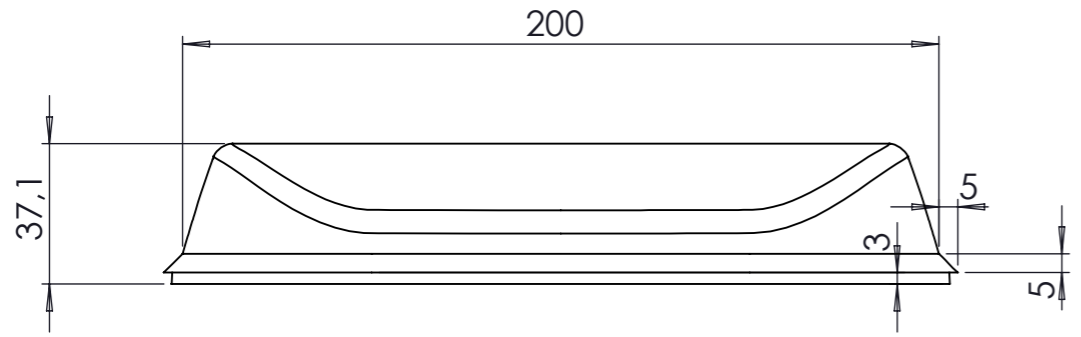
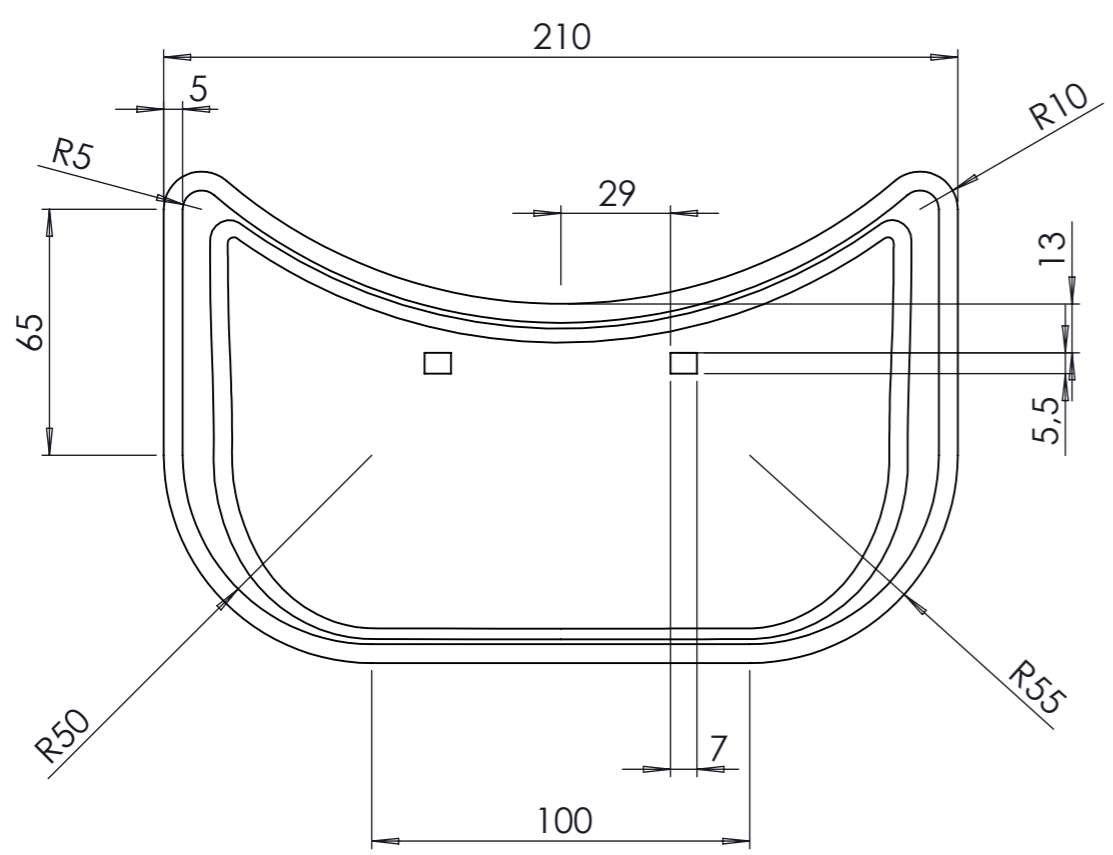
ITEM NO.	PART NUMBER	DESCRIPTION	QTY.
1	Onderkant VR Bril		1
2	Bovenkant VR Bril 3		1
3	assembly telefoon inklemmen		1
3.1	telefoon inklemmen bak		1
3.2	schuifje telefoon		2
4	assembly lenzen		1
4.1	rails lenzen		1
4.2	draad		1
4.3	wieltje		1
4.4	moer		1
4.5	lens		2
5	ISO 7045 - M1.6 x 4 - Z - 4N		2

Opp. ruwheid (zie NEN 3634)	Maattolerantie (zie NEN-ISO 2768)	ISO 7045 - M1.6 x 3	MATERIAL: ABS	Vorm- en plaatsol. (zie NEN-ISO 11010)
	SCHAAL: 1:2	GETEKEND: Stijn Verrijt		OPMERKING:
	MAATEENHEID: mm	AFDELING: IPO		
	DATUM: 18-12-17	GEZIEN:		
		BENAMING: Assembly VR Bril		NUMMER: 004
				<b>A3</b>

1 2 3 4 5 6

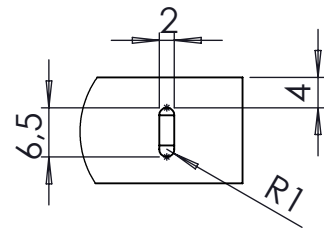
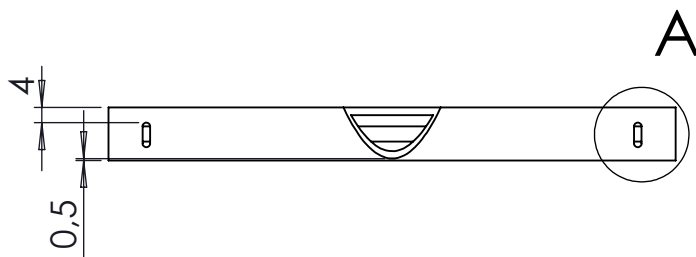
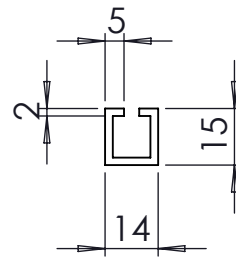
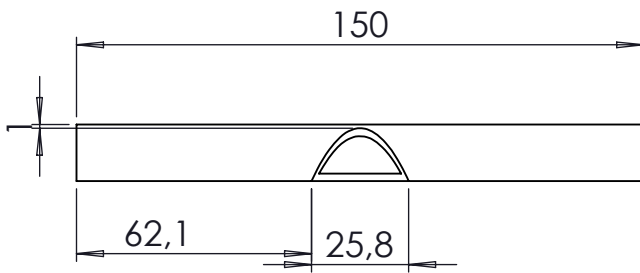
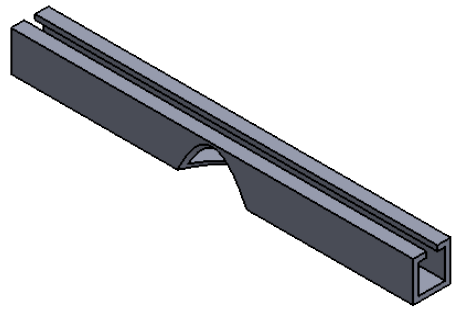
1 2 3 4 5 6

A  
B  
C  
D



Opp. ruwheid (zie NEN 3634)	Maattoleranties NEN-ISO 2768-	MATERIAAL:ABS	Vorm- en plaatstol. (zie NEN-ISO11010)
	SCHAAL:1:2	GETEKEND:Stijn Verrijt	OPMERKING:
	MAATEENHEID: mm	AFDELING:IPO	
	DATUM:18-12-17	GEZIEN:	BENAMING:Bovenkant VR Bril 3
			<b>A3</b>

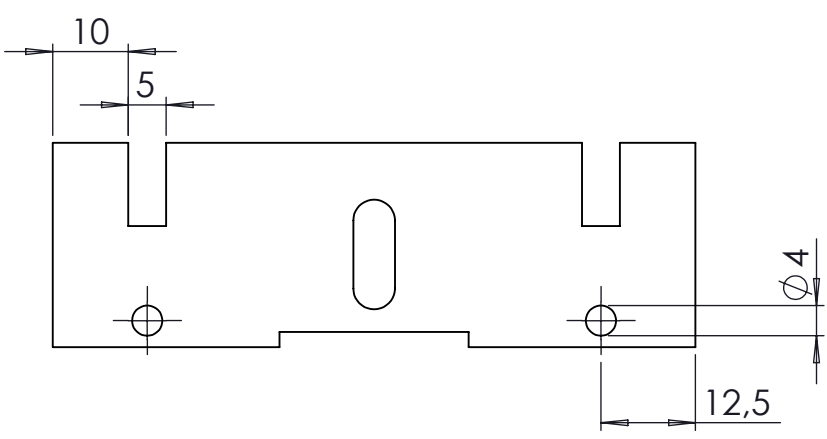
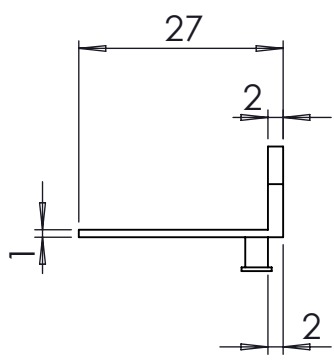
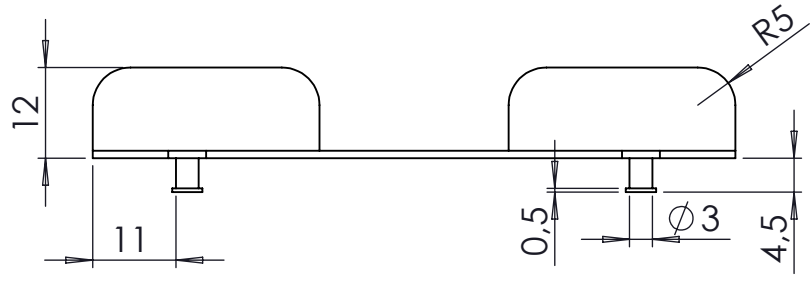
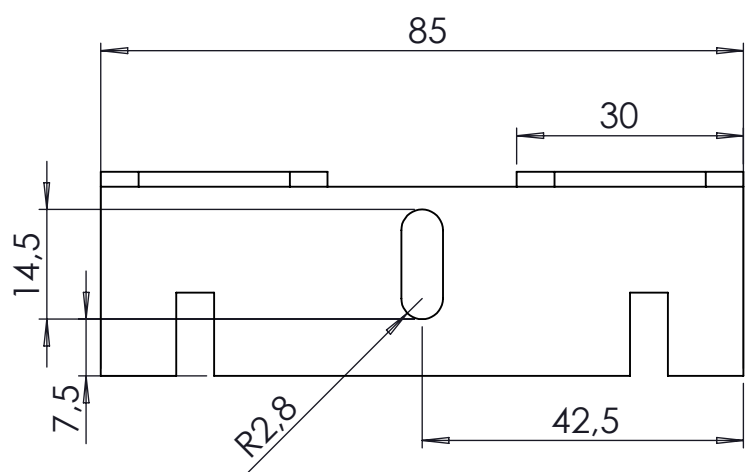
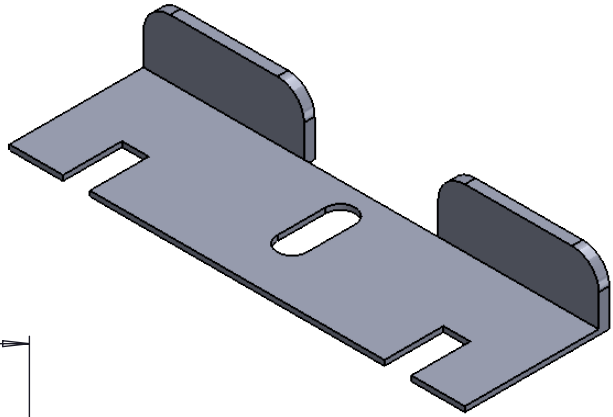
1 2 3 4 5 6



### DETAIL A

SCALE 1 : 1

Opp. ruwheid (zie NEN 3634)	Maattoleranties NEN-ISO 2768-0,2mm	MATERIAAL: ABS	Vorm- en plaatstol. (zie NEN-ISO11010)
	SCHAAL: 1:2	GETEKEND: Stijn Verrijt	OPMERKING:
	MAATEENHEID: mm	AFDELING: IPO	
	DATUM: 18-12-17	GEZIEN:	
	BENAMING: Rails lenzen	NUMMER: 002	A4



Opp. ruwheid (zie NEN 3634)	Maattoleranties NEN-ISO 2768-0,2mm	MATERIAAL: ABS	Vorm- en plaatstol. (zie NEN-ISO11010)
	SCHAAL: 1:1	GETEKEND: Stijn Verrijt	OPMERKING:
	MAATEENHEID: mm	AFDELING: IPO	
	DATUM: 18-12-17	GEZIEN:	
	BENAMING: Schuifje telefoon	NUMMER: 003	A4

